



BPC WALL PANEL COLLECTION

Affordable, Formaldehyde-Free Wall Panels



Why Choose Our Wall Panels?

Redefine your living space with our **affordable, formaldehyde-free** wall panels. Made from eco-friendly materials, they ensure a healthier home for everyone including **pets**. Our durable panels resist termites, mold, water, moisture and requires minimal maintenance. Enjoy enhanced sound insulation for a peaceful and yet stylish environment.

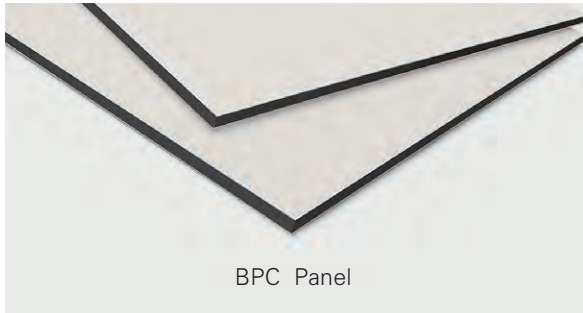




Features

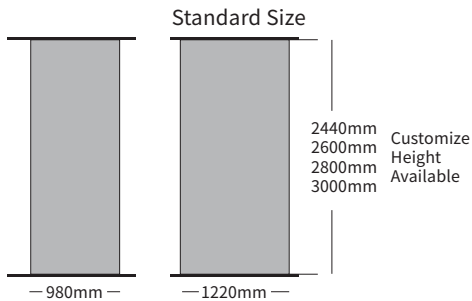
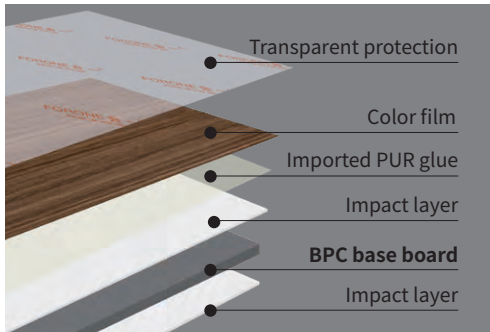
-  Formaldehyde-Free
-  Eco-Friendly
-  Pets Friendly
-  Anti-Termite
-  Mold Resistant
-  Water Resistant
-  Moisture Resistant
-  Durable
-  Minimal Maintenance
-  Sound Insulation



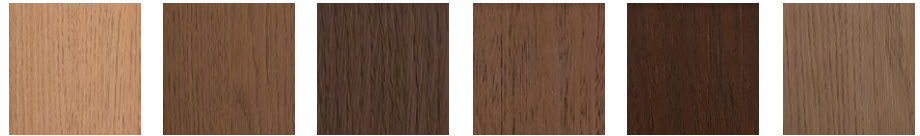


BPC Panel

Base Material : Resin / Bamboo Charcoal Powder/ Calcium Powder / Processing AIDS
 Surface Material : PET-G / PP / PVC
 Fire Proof Rating : B1/B2
 Formaldehyde Level : ENF/E0
 Certification : CE, SGS, ECO, CNAS, ISO 9001
 Application : Interior Wall & Ceiling Decoration



WOOD SCRATCH-RESISTANT SERIES



M / P-077R M / P-075R M / P-076R M / P-092R M / P-093R M / P-071R

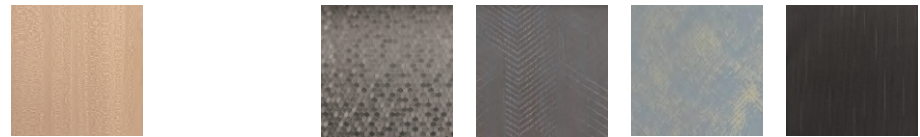


M / P-072R M / P-073R M / P-074R M / P-108R M / P-109R M / P-110R



M / P-111R M / P-101Q M / P-078R M / P-070R M / P-068R M / P-097Q

FABRIC EASY CLEAN SERIES



M / P-086Q M / P-001U M / P-087R M / P-088R M / P-002Q

REGULAR FABRIC SERIES



M / P-098Q M / P-099Q M / P-100Q

Certifications







Explore More

Patterns
In The Color Catalog



UV Resistant



Wearproof



Easy Clean



Anitcarrision



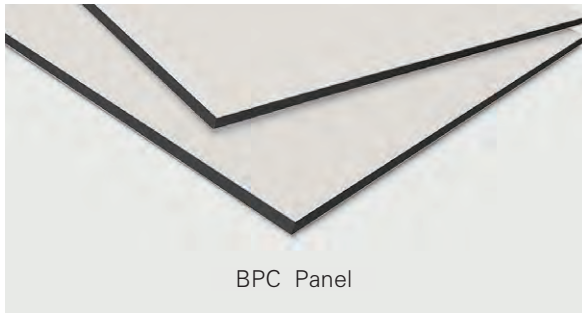
Seamless



Case Studies

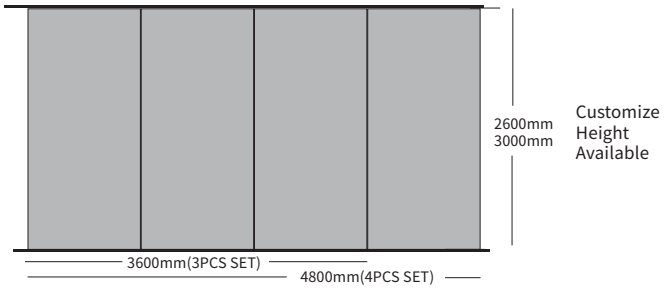
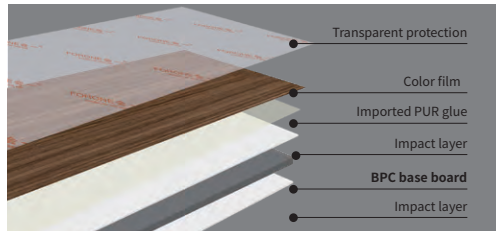


MARBLE CONNECTED PATTERN SERIES



BPC Panel

Base Material : Resin / Bamboo Charcoal Powder/ Calcium Powder / Processing AIDS
 Surface Material : PET-G / PP / PVC
 Fire Proof Rating : B1/B2
 Formaldehyde Level: ENF/E0
 Certification : CE, SGS, ECO, CNAS, ISO 9001
 Application : Interior Wall & Ceiling Decoration



MARBLE CONNECTED PATTERN SERIES (Sell By Set)



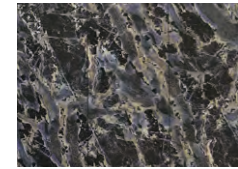
M/P-044P



M/P-048P



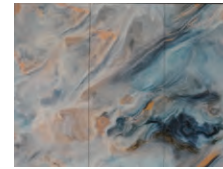
M/P-046P



M/P-049P



M/P-107P



M/P-043P



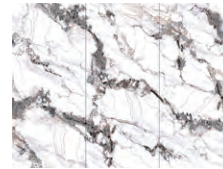
M/Q-38P



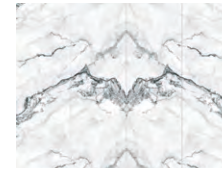
M/Q-40P



M/Q-39P



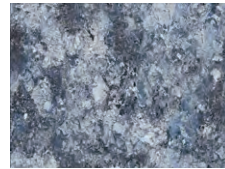
M/Q-173P



M/Q-177P



M/Q-174P



M/Q-175P



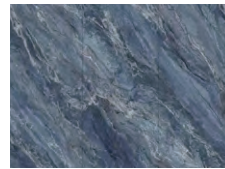
M/Q-176P



M/P-045P



M/P-047P



M/Q-100P

Certifications







Explore More

Patterns
In The Color Catalog



UV Resistant



Wearproof



Easy Clean



Anticrission



Seamless

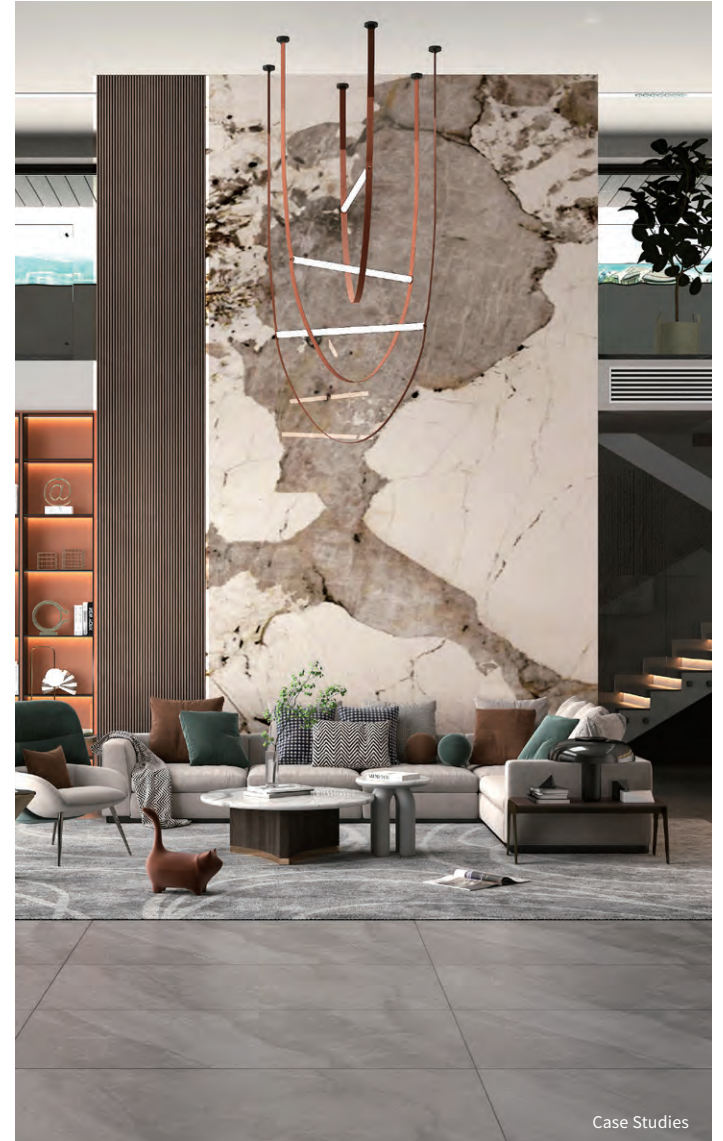


Case Studies



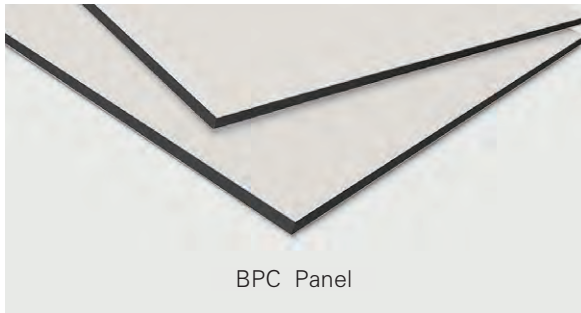


Case Studies



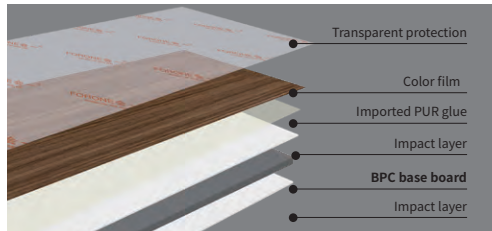
Case Studies

MARBLE GLOSSY/MATTE SERIES

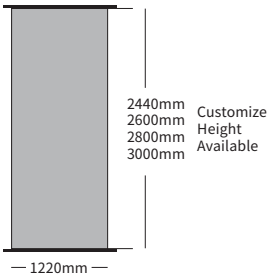


BPC Panel

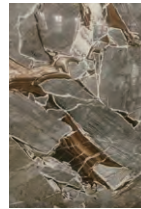
Base Material : Resin / Bamboo Charcoal Powder/ Calcium Powder / Processing AIDS
 Surface Material : PET-G / PP / PVC
 Fire Proof Rating : B1/B2
 Formaldehyde Level: ENF/E0
 Certification CE, SGS, ECO, CNAS, ISO 9001
 Application : Interior Wall & Ceiling Decoration



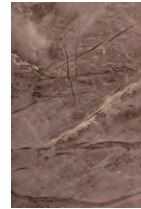
Standard Size



MARBLE GLOSSY SERIES



M / P-97C



M / P-038C



M / P-038C



M / P-042C



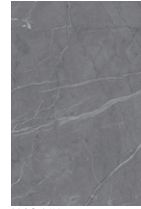
M / Q-31U



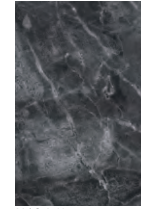
M / Q-32U



M / Q-33U



M / Q-34U



M / Q-35U



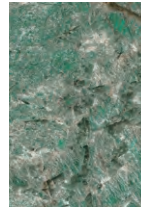
M / Q-36AU/Q-36BU



M / Q-168U



Q-167U



M / Q-168U



M / Q-168AU/Q-168BU



M / Q-170AU/Q-170BU

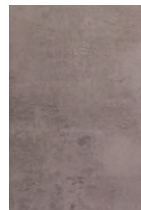


M / Q-171AU/Q-171BU



M / Q-172AU/Q-172BU

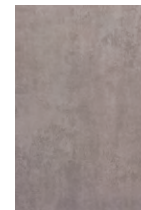
MATTE SLATE & ROCK SERIES



M / P-089R



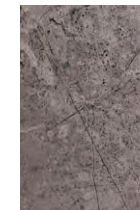
M / P-090R



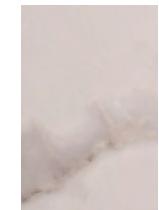
M / P-091R



M / P-038C



M / P-094Q



M / P-095Q

Certifications



NO:801063844849



NO.SHAHL23015568201







Explore More

Patterns
In The Color Catalog



UV Resistant



Wearproof



Easy Clean



Anitcarrision

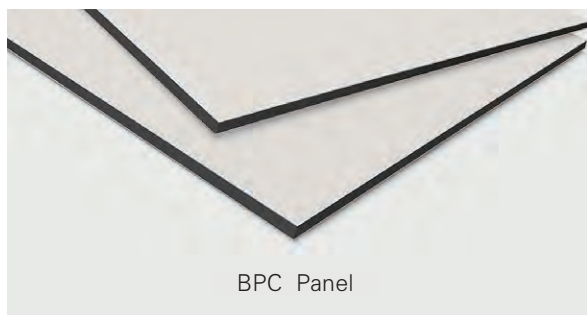


Seamless



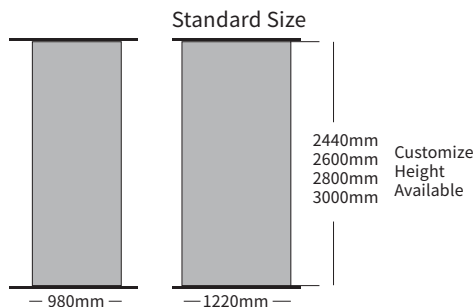
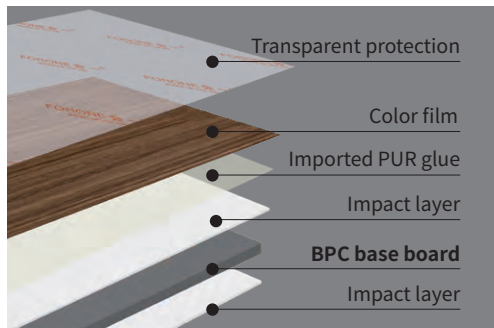


Case Studies

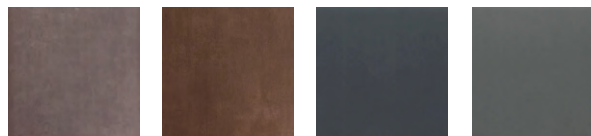


BPC Panel

Base Material : Resin / Bamboo Charcoal Powder/ Calcium Powder / Processing AIDS
 Surface Material : PET-G / PP / PVC
 Fire Proof Rating : B1/B2
 Formaldehyde Level: ENF/E0
 Certification : CE, SGS, ECO, CNAS, ISO 9001
 Application : Interior Wall & Ceiling Decoration

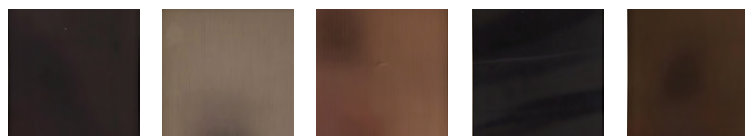


AGED METAL MATTE SERIES



M / P-068L M / P-067L M / K01-HM011R M / K01-HM012R

METAL BRIGHT SERIES



M / P-020K M / P-018K M / P-013K M / P-014K M / P-016K

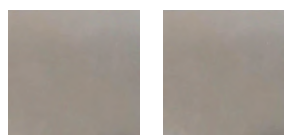
METALLIC CIRCLE SERIES



M / Q-95V M / Q-96V M / P-050Y M / P-052Y M / P-051Y

METALLIC CIRCLE SERIES

METALLIC BRUSH SERIES



M / Q-97V M / Q-98V

TITANIUM METAL SERIES



M / P-060K M / P-027K M / P-028K M / P-029K

METAL MATTE SERIES



M / Q-182L M / Q-179L M / Q-180L M / Q-183L M / Q-178L M / Q-181L

Certifications







Explore More

Patterns
In The Color Catalog



UV Resistant



Wearproof



Easy Clean



Anitcarrision



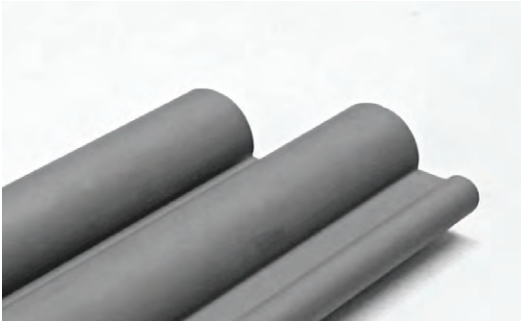
Seamless



Case Studies

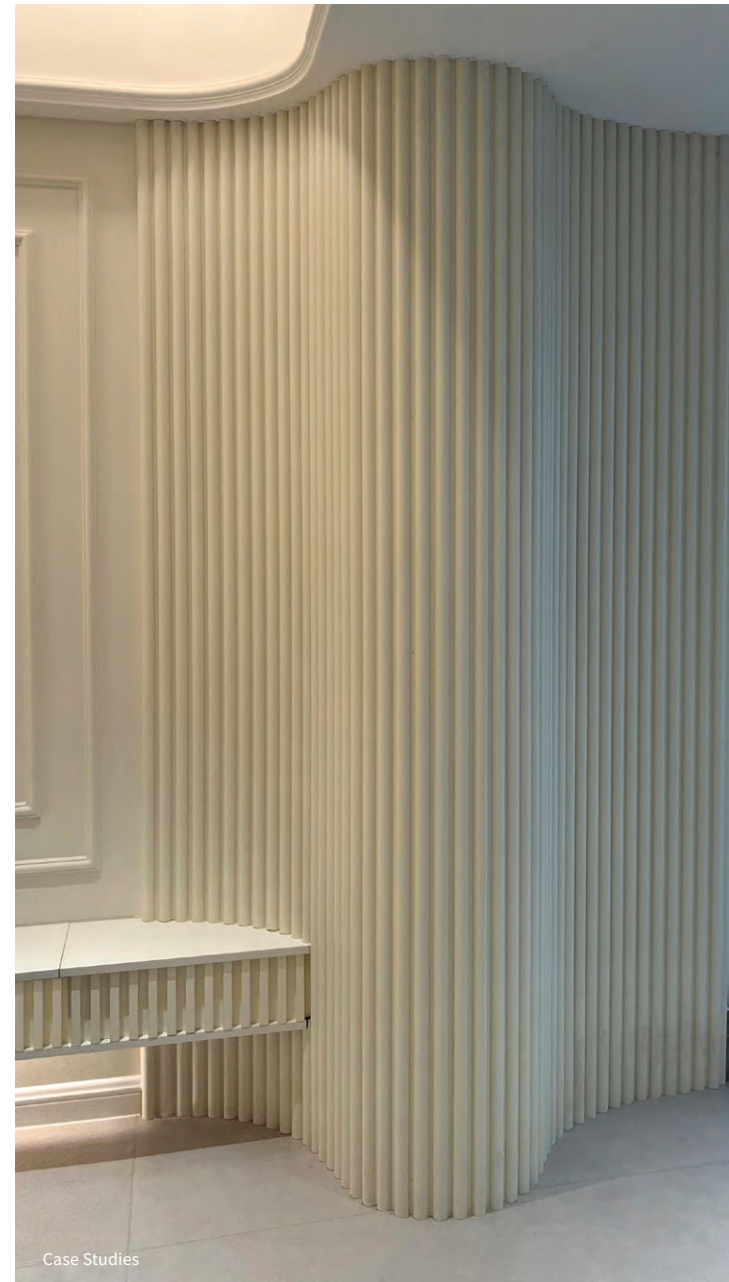
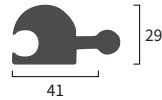


Flexible Rotate Shapes



MODEL: 41BTH

FRONT SIZE AFTER INSTALLATION:
41mm(W)*3000mm(H)



Pack Info		
Panels/Box:	20	
CBM/Box:	0.10	
Container Loading (Estimate 2.8m)		
20'GP:	260BOX	5280PCS
40'GP:	490BOX	9760PCS
40'HQ:	490BOX	9760PCS

Texture Selection



Wood



Fabric



Marble Stone



Metallic



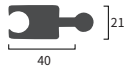
Solid Color



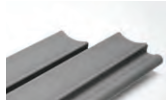
Leather



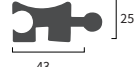
40PH



40



43NBH



43

Case Studies

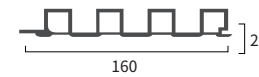


Case Studies

Fluted Shapes



MODEL: 160GS



FRONT SIZE AFTER INSTALLATION:
160mm(W)*3000mm(H)

Pack Info		
Panels/Box:	14	
CBM/Box:	0.11	
Container Loading (Estimate 2.8m)		
20'GP:	260BOX	3700PCS
40'GP:	530BOX	7400PCS
40'HQ:	580BOX	8060PCS

Texture Selection



Wood



Fabric



Marble Stone



Metallic



Solid Color



Leather


Application Area

HOTEL HOME LIBRARY SCHOOL MALL
SUPERMARKET OFFICE CLUB CATERING

Fluted Shapes



MODEL: 139XGS

FRONT SIZE AFTER INSTALLATION:  14
139mm(W)*3000mm(H)

Pack Info		
Panels/Box:	20	
CBM/Box:	0.10	
Container Loading (Estimate 2.8m)		
20'GP:	260BOX	5280PCS
40'GP:	500BOX	10080PCS
40'HQ:	500BOX	10080PCS

Texture Selection



Wood



Fabric



Marble Stone



Metallic



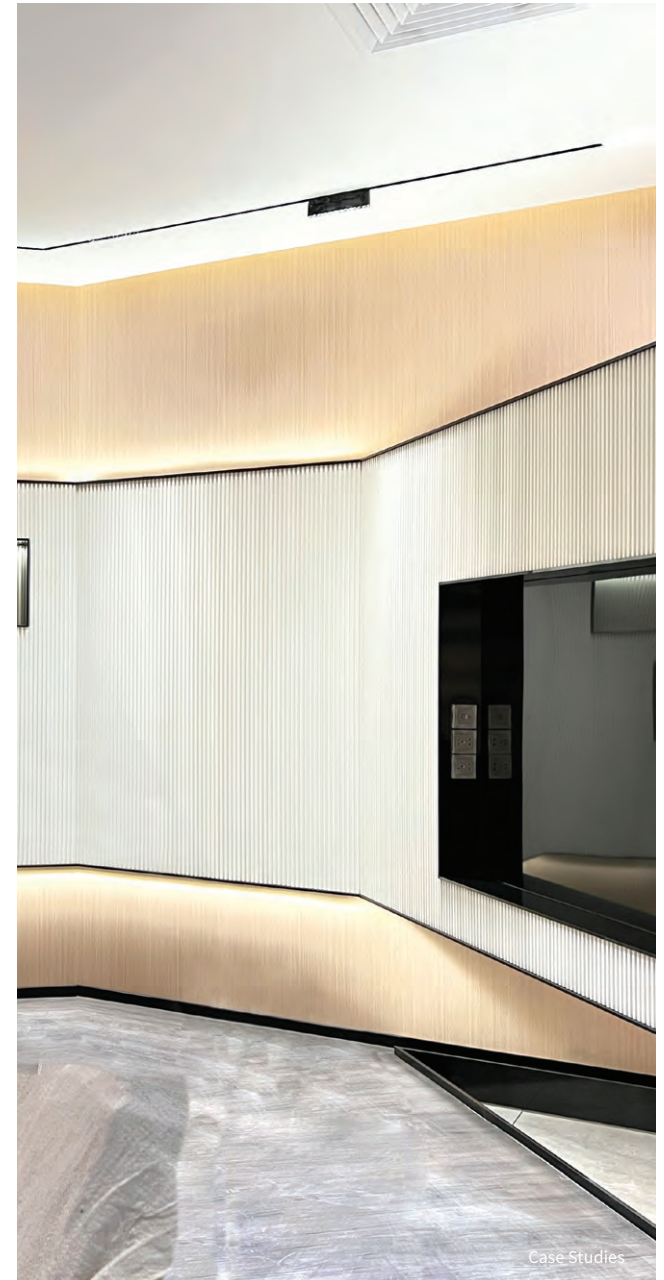
Solid Color



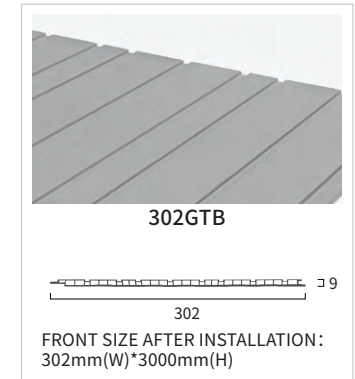
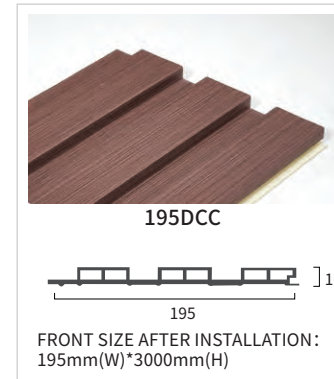
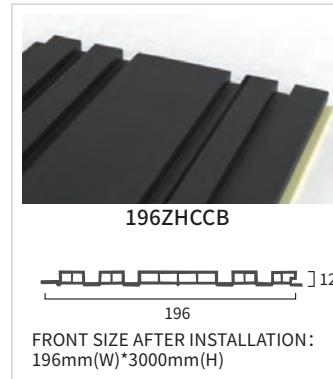
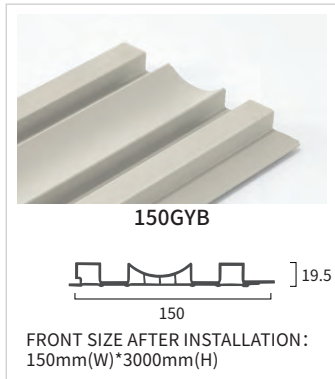
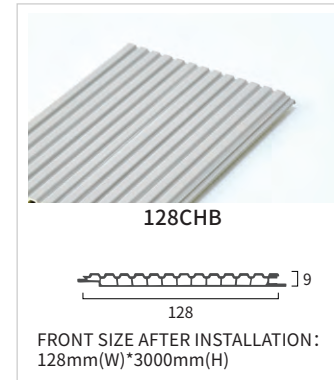
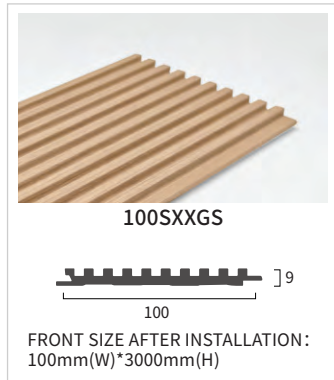
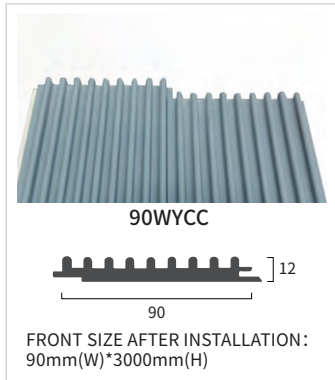
Leather

Application Area

HOTEL HOME LIBRARY SCHOOL MALL
SUPERMARKET OFFICE CLUB CATERING



Case Studies

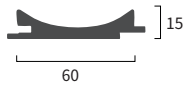


Waves Shapes



MODEL: 60YYB

FRONT SIZE AFTER INSTALLATION:
60mm(W)*3000mm(H)



Pack Info		
Panels/Box:	35	
CBM/Box:	0.12	
Container Loading (Estimate 2.8m)		
20'GP:	240BOX	8400PCS
40'GP:	480BOX	16800PCS
40'HQ:	530BOX	18550PCS



Texture Selection



Wood



Fabric



Marble Stone



Metallic



Solid Color



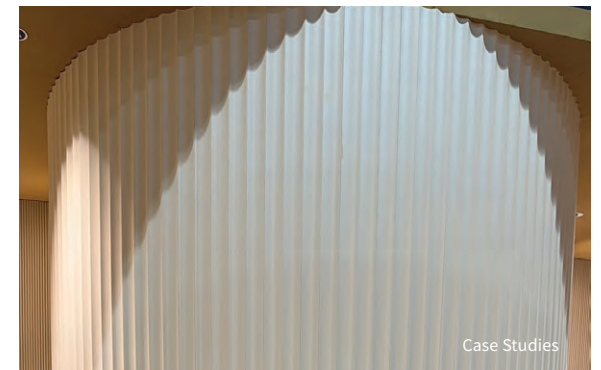
Leather

Application Area

HOTEL HOME LIBRARY SCHOOL MALL
SUPERMARKET OFFICE CLUB CATERING



Inner Arc



Outer Arc

Case Studies



Case Studies

120BYB

FRONT SIZE AFTER INSTALLATION:
120mm(W)*3000mm(H)

110XSNYB

FRONT SIZE AFTER INSTALLATION:
110mm(W)*3000mm(H)

125WLB

FRONT SIZE AFTER INSTALLATION:
125mm(W)*3000mm(H)

140BLB

FRONT SIZE AFTER INSTALLATION:
140mm(W)*3000mm(H)

150XSJB

FRONT SIZE AFTER INSTALLATION:
150mm(W)*3000mm(H)

170NOB

FRONT SIZE AFTER INSTALLATION:
170mm(W)*3000mm(H)

300BLB

FRONT SIZE AFTER INSTALLATION:
300mm(W)*3000mm(H)

206SXBGZSQB

FRONT SIZE AFTER INSTALLATION:
206mm(W)*3000mm(H)

200YLB

FRONT SIZE AFTER INSTALLATION:
200mm(W)*3000mm(H)


44YYB

FRONT SIZE AFTER INSTALLATION:
44mm(W)*3000mm(H)

Semicircle Shapes



MODEL: 150XBY

FRONT SIZE AFTER INSTALLATION:  150mm(W)*3000mm(H)

Pack Info		
Panels/Box:	14	
CBM/Box:	0.09	
Container Loading (Estimate 2.8m)		
20'GP:	270BOX	4010PCS
40'GP:	570BOX	8010PCS
40'HQ:	600BOX	8430PCS

Texture Selection



Wood



Fabric



Marble Stone



Metallic



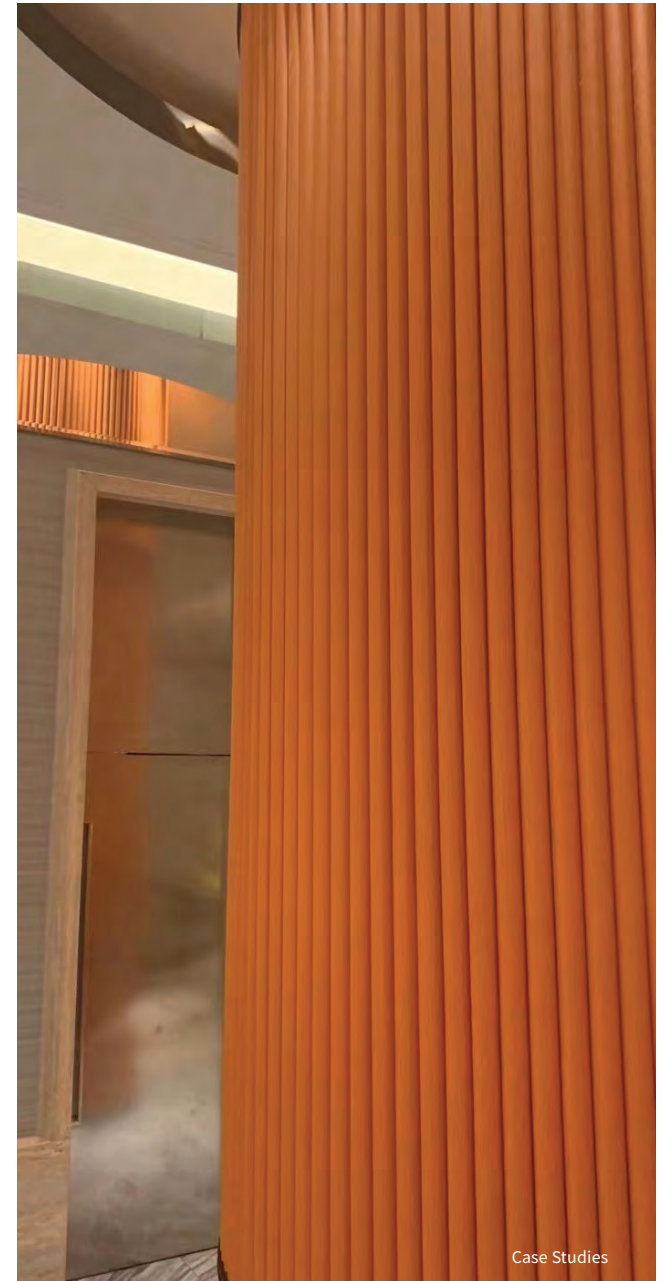
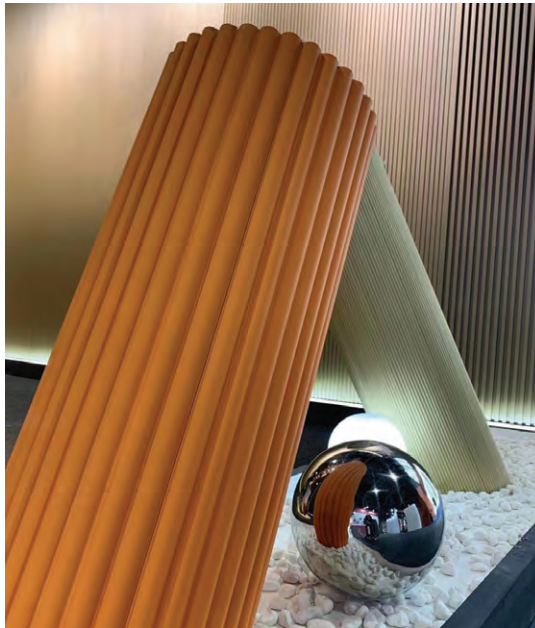
Solid Color



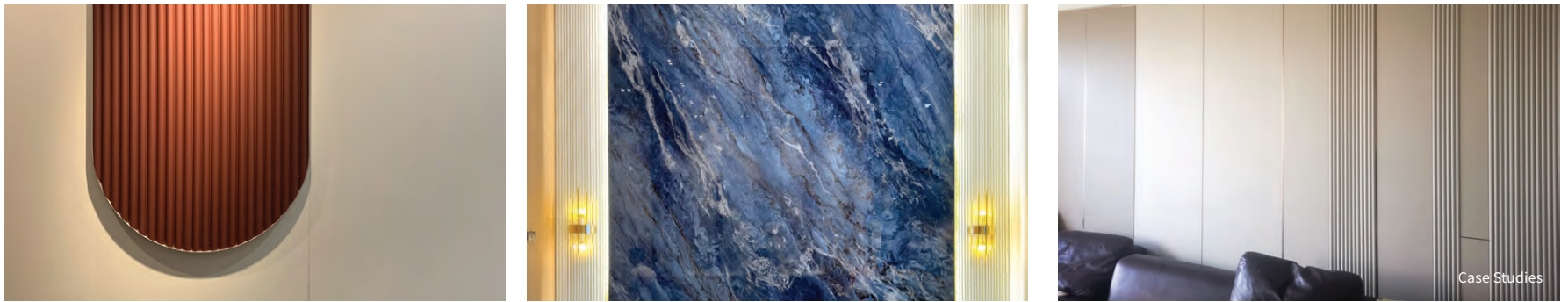
Leather

Application Area

HOTEL HOME LIBRARY SCHOOL MALL
SUPERMARKET OFFICE CLUB CATERING



Case Studies



146BGZBLB

146

FRONT SIZE AFTER INSTALLATION:
146mm(W)*3000mm(H)

160BYB

160

FRONT SIZE AFTER INSTALLATION:
160mm(W)*3000mm(H)

170DBY

170

FRONT SIZE AFTER INSTALLATION:
170mm(W)*3000mm(H)

195WYB

195

FRONT SIZE AFTER INSTALLATION:
195mm(W)*3000mm(H)

226YHB

226

FRONT SIZE AFTER INSTALLATION:
226mm(W)*3000mm(H)

145SXBYB

145

FRONT SIZE AFTER INSTALLATION:
145mm(W)*3000mm(H)

100SXXBY

100

FRONT SIZE AFTER INSTALLATION:
100mm(W)*3000mm(H)

150SXBGZBLB

150

FRONT SIZE AFTER INSTALLATION:
150mm(W)*3000mm(H)

160SYB

160

FRONT SIZE AFTER INSTALLATION:
160mm(W)*3000mm(H)

Explore More

Shapes
In Latest Designs

Sincerely,

Other Shapes



101XSJ



FRONT SIZE AFTER INSTALLATION:
101mm(W)*3000mm(H)



150JZT



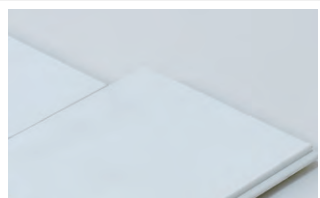
FRONT SIZE AFTER INSTALLATION:
150mm(W)*3000mm(H)



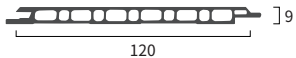
201ZHSJB



FRONT SIZE AFTER INSTALLATION:
201mm(W)*3000mm(H)



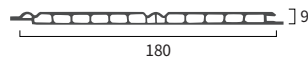
120PB



FRONT SIZE AFTER INSTALLATION:
120mm(W)*3000mm(H)



180ZSB

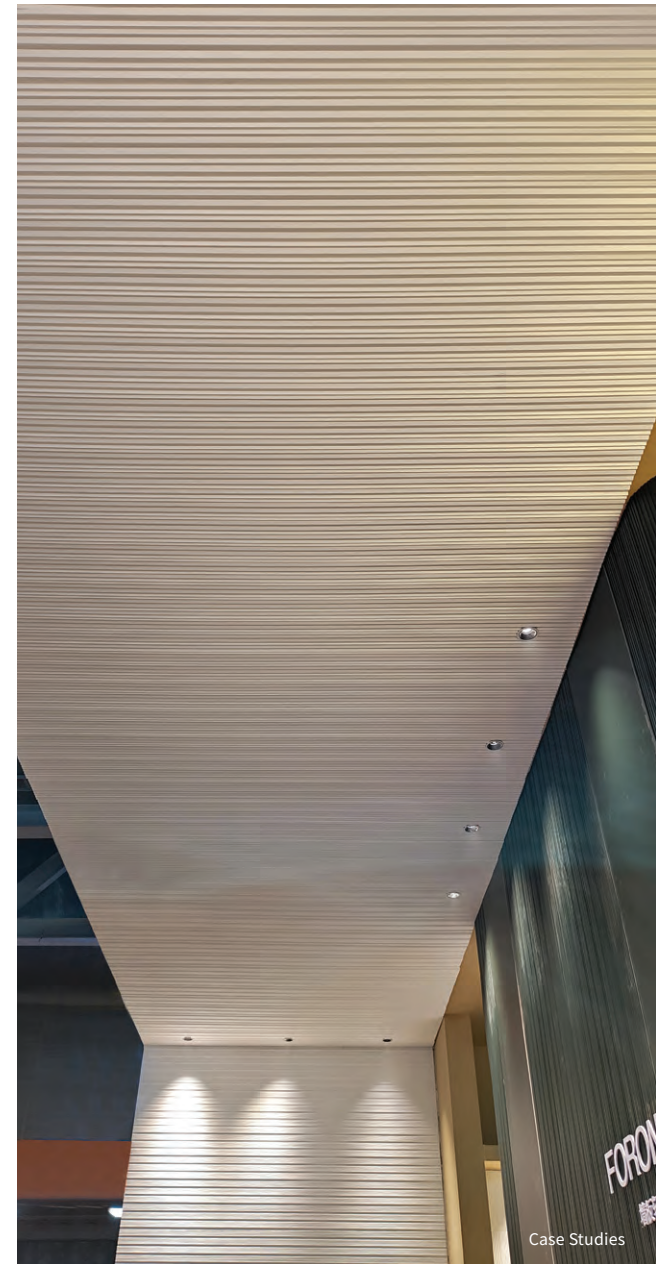


FRONT SIZE AFTER INSTALLATION:
180mm(W)*3000mm(H)

Explore More

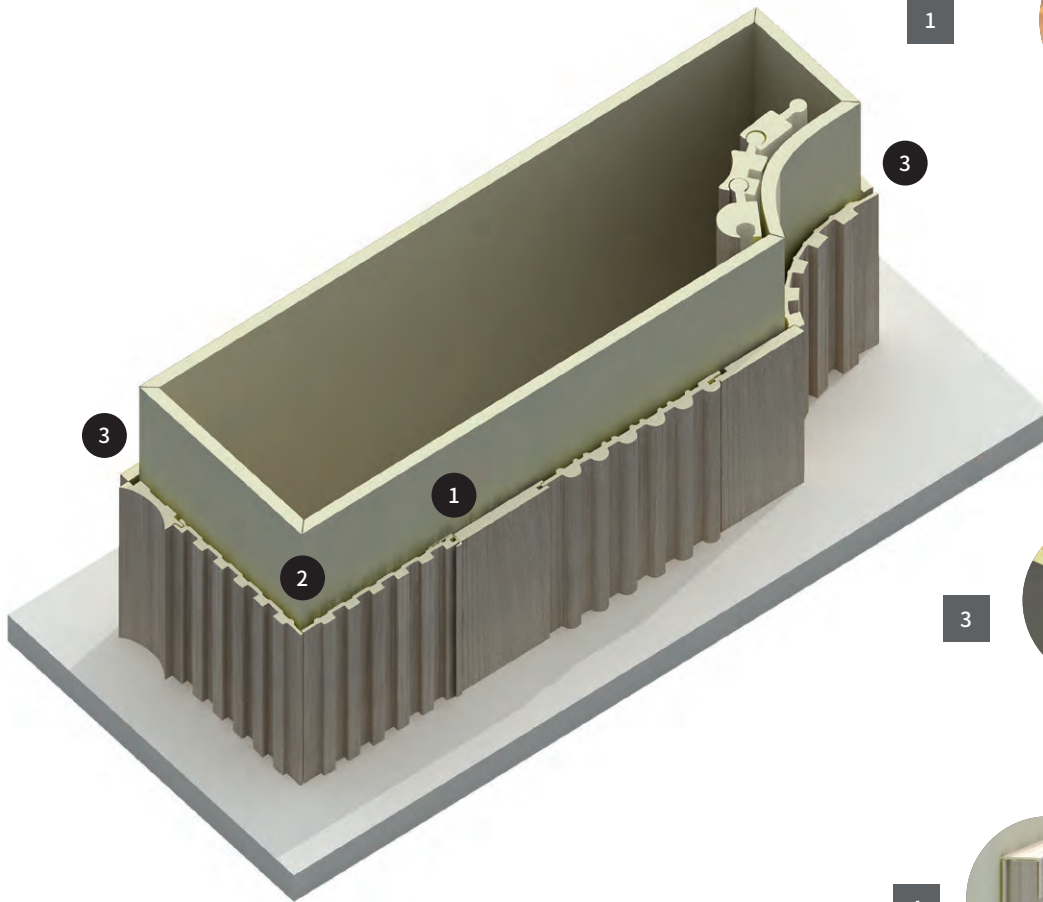
Shapes
In Latest Designs

Sincerely,

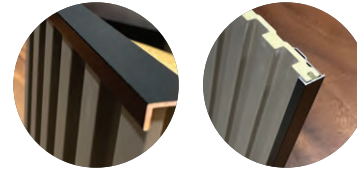


Case Studies

Connection and Finish Methods



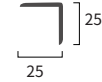
External Corner



Aluminium Profile Finish



MODEL: 25*25L

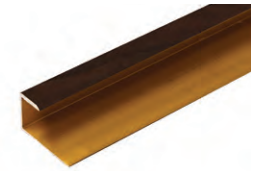


FRONT SIZE AFTER INSTALLATION:
25mm(W)*3000mm(H)

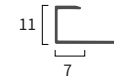
2



Shapes Panel Joint With Shapes Panel



MODEL: End Cap
(Can Customize Same Color)



FRONT SIZE AFTER INSTALLATION:
7mm(W)*3000mm(H)

3



Shapes Panel Joint With Flat Board

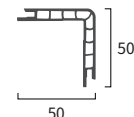


Same Color BPC Profile Finish

4

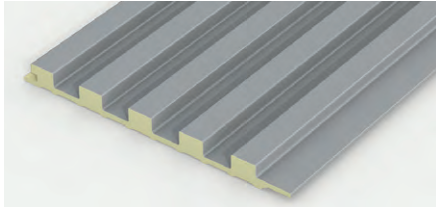


MODEL: 50ZJB

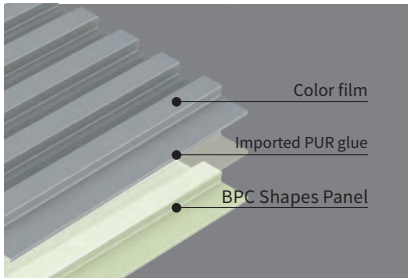


FRONT SIZE AFTER INSTALLATION:
50mm(W)*3000mm(H)

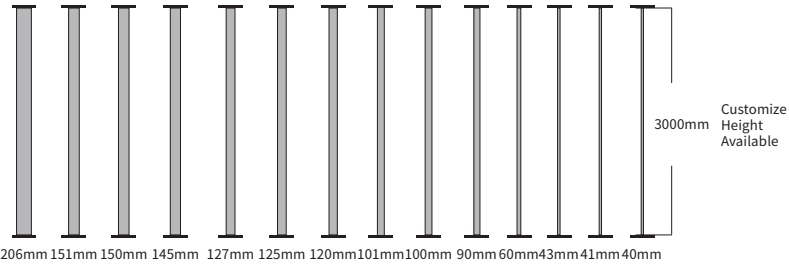
PRODUCT DESCRIPTION



Base Material : Resin / Bamboo Powder/ Calcium Powder / Processing AIDS
 Surface Material : PP / PVC
 Fire Proof Rating : B1/B2
 Formaldehyde Level: ENF/E0
 Certification : CE, SGS, ECO, CNAS, ISO 9001
 Application : Interior Wall & Ceiling Decoration



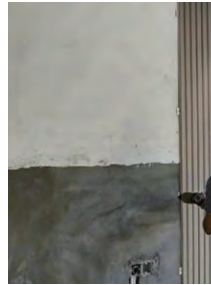
Standard Size



Certifications



INSTALLATION ENVIRONMENTS



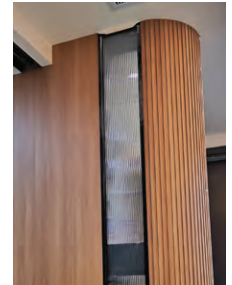
Directly Install On Wall with Structural Adhesive



Add Studs If Wall Not Flat



Steel Frame + Studs Base Board Not Required



Bendable & Flexible Grooving On Back of Panel (Optional)

CEILING INSTALLATION ENVIRONMENTS



Directly On Steel Frame



Directly On Wood Frame



Add Metal Clips In The Edge

INSTALLATION MATERIALS



Structural Adhesive

INSTALLATION TOOLS



Trimming Machine



Hot Wind Machine

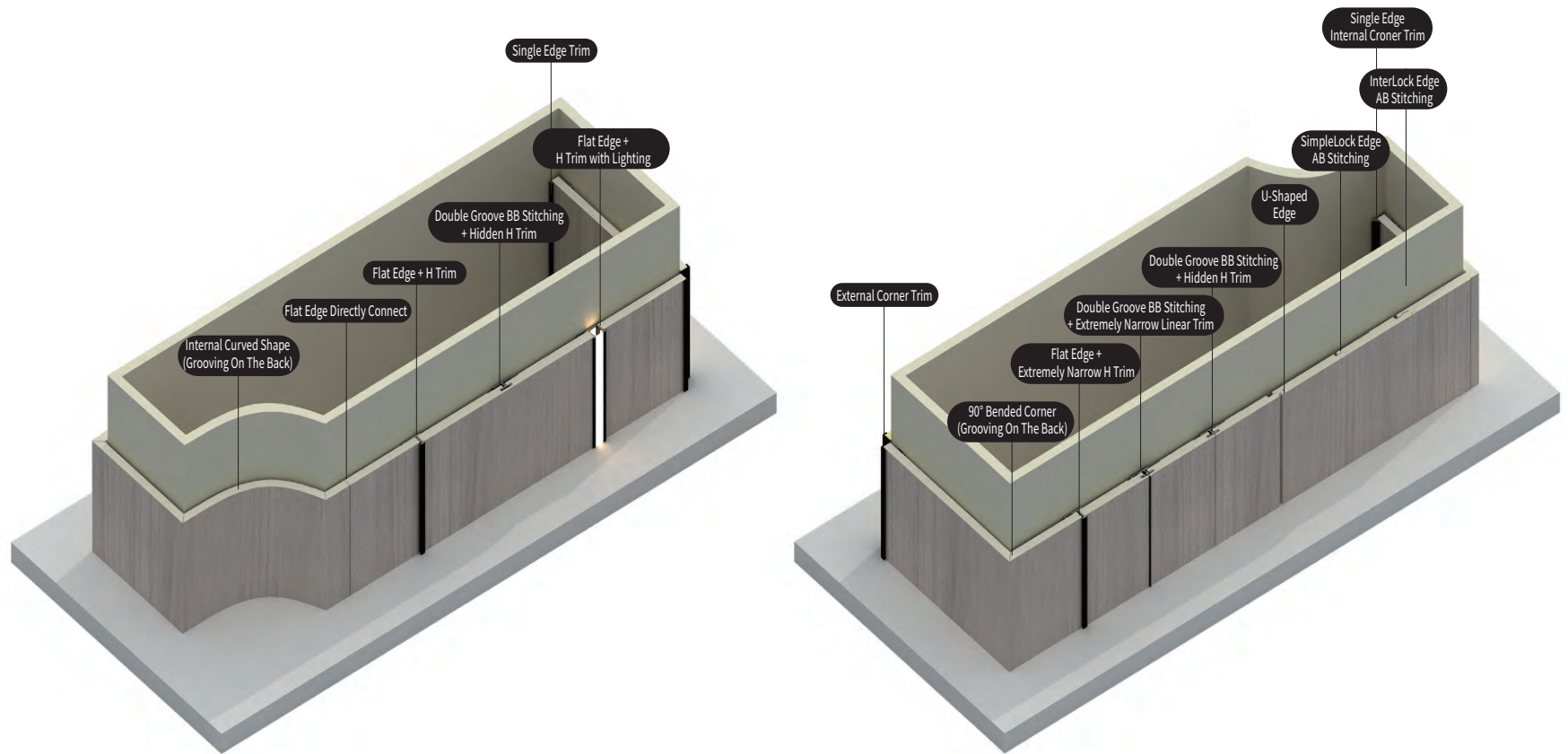


Portable Cutting Machine



Portable Cutting Table

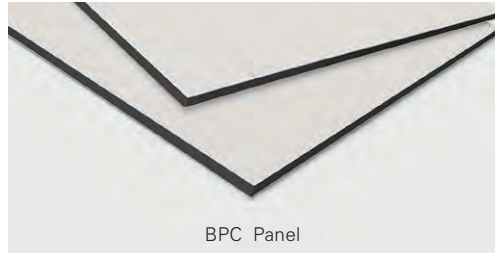
Within a project, there are always different corners and connections that need to be resolved. A complete panels & board system with abundant profile options will provide more options for final results and easier solutions.



Base Layer Options



HD BPC Panel



BPC Panel

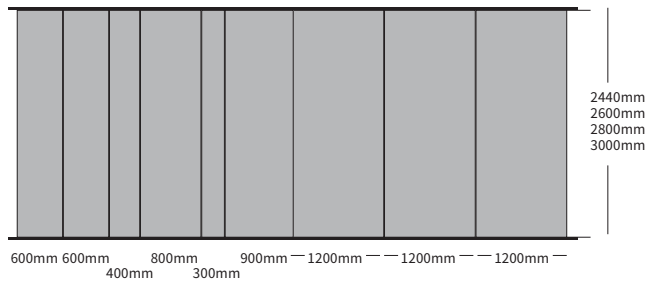


Bamboo Panel



Aluminium SPC Panel

Diverse Size Combinations



Grooving and Connecting Methods for Solid Panels



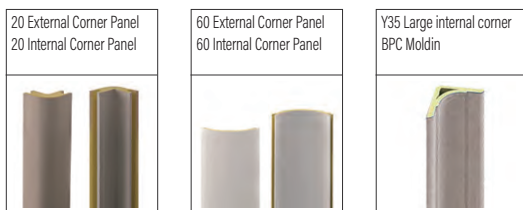
Extremely Narrow Category



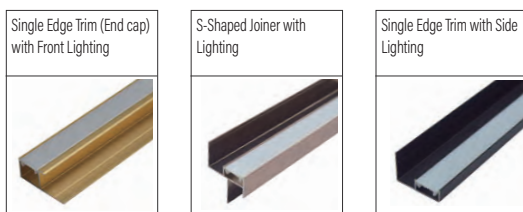
Skirting Line (Baseboard) Category



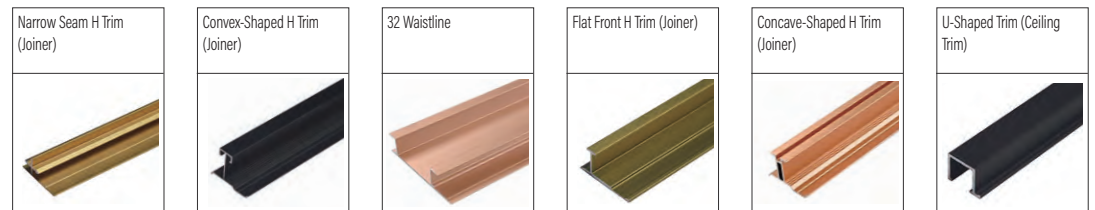
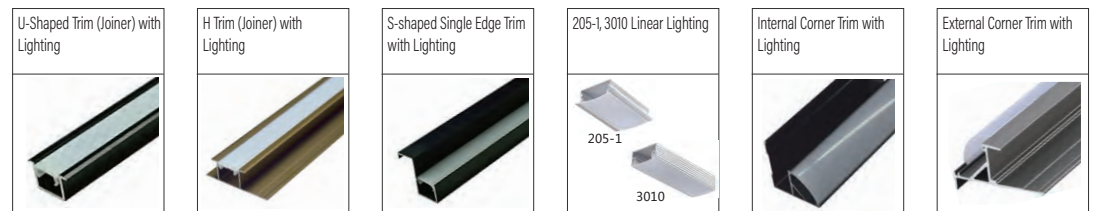
Skirting Line (Baseboard) Category



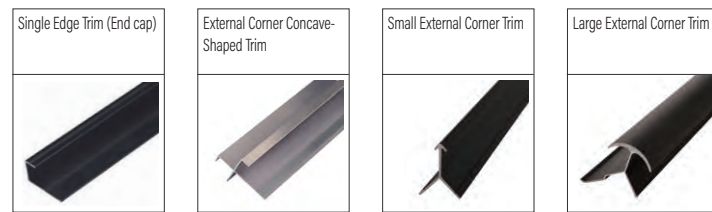
Edge Trim With Lighting Category



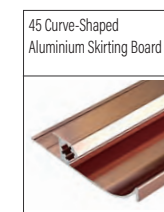
Decoration Category



Edge Trimming Category



Aluminium Skirting Board



The Most Preferred Wall Decorative Material Brand By Designers

CASTELLA LIVING PTE. LTD.

Address: 62 Ubi Road 1, #01-26,
Oxley Bizhub 2 Singapore 408734
Email: sales@castellaliving.com
Contact: +65 8925 6928